



## LG01 (aka Unit 1)/4 Springwood Lane Springwood NSW

2 2 1

**LOCATION:** Peace and quiet with the utmost convenience, there is no better location for access to Springwood Village and all its facilities, walk 150m to rail and bus, walk 300m to cafes, banks and great night time eating, walk 350m to the supermarket all accessible by foot path.

**STYLE:** 5 year old contemporary apartment in a block of 12, the only of its kind in the Lower Blue Mountains.

**LAYOUT:** Well proportioned with living and dining just off the kitchen, 2 generous double bedrooms with built-in robes and primary has en-suite, huge main bathroom with free standing bath tub, designed with accessibility in mind, generous internal laundry and large undercover deck overlooking bushland and beyond.

**FEATURES:** Indulge in the contemporary kitchen with stone benchtops and breakfast bar, SMEG stainless

**Type** : Apartment

**Price** : \$ 749,990

**View** : <https://www.chapmanrealestate.com.au/sale/nsw/hawkesbury/springwood/residential/apartment/7783712>



**Jonathan Crisp**  
02 4751 8266

[For full version visit the website](#)

<https://www.chapmanrealestate.com.au>

LG01/4 SPRINGWOOD LANE, SPRINGWOOD



**INTERNAL**  
91 m<sup>2</sup>  
**EXTERNAL**  
18 m<sup>2</sup>  
**TOTAL**  
109 m<sup>2</sup>

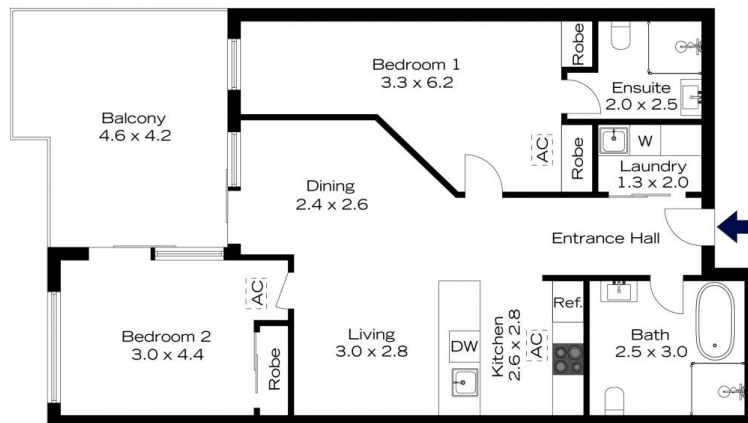


The floor plan is not to scale; measurements are indicative and in metres. All features included in this 3D plan are for inspiration purposes only. This is not an exact replica of the property or the position of exterior elements. Plans should not be relied on. Interested parties should make and rely on their own enquiries.

LG01/4 SPRINGWOOD LANE, SPRINGWOOD



(Not In Position)



(Not In Position)

**INTERNAL**  
91 m<sup>2</sup>  
**EXTERNAL**  
18 m<sup>2</sup>  
**TOTAL**  
109 m<sup>2</sup>



The floor plan is not to scale; measurements are indicative and in metres. Exterior elements are not in position. Plans should not be relied on. Interested parties should make and rely on their own enquiries.