



105 Paterson Road Springwood NSW

4 2 6

LOCATION - Paterson Road, a prestige location known for newer enclaves and sprawling acreage properties along with its easy access to Springwood Village and direct access to the highway.

STYLE - The original "Paterson Farmhouse" is a single level 1890's cottage which has undertaken significant renovation and extension providing the perfect blend of old and new farm house, situated on a usable 4899m² which includes an enormous shed with mezzanine.

LAYOUT - 2 separate living rooms, 4 double size bedrooms, primary with en-suite and robes, open plan kitchen, dining/living which flows to alfresco and outdoor entertaining.

FEATURES - Gourmet kitchen with large feature island bench, Bellings oven, two drawer dishwasher, main bathroom with claw foot free standing bath, timber flooring, ornate fire places, high ceilings, highlight windows capture

Price : \$ 2,155,000

Land Size : 4899 sqm

View : <https://www.chapmanrealestate.com.au/sale/nsw/hawkesbury/springwood/residential/home/7809226>



Jonathan Crisp
02 4751 8266



Claudia Hayes
02 4751 8266

105 PATERSON ROAD, SPRINGWOOD



INTERNAL
222 m²

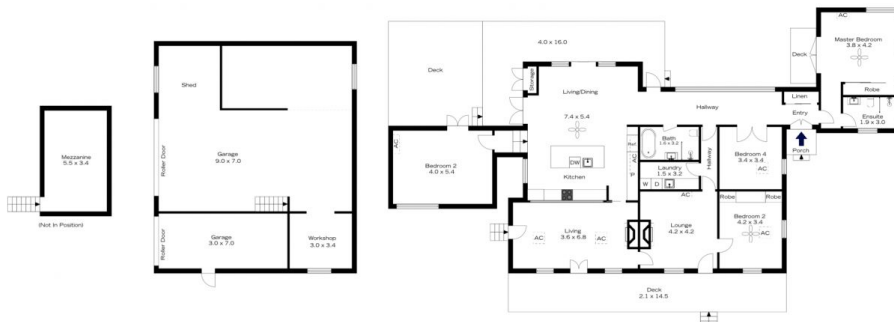
EXTERNAL
98 m²

TOTAL
320 m²



The floor plan is not to scale; measurements are indicative and in metres. All features included in this 3D plan are for inspiration purposes only. This is not an exact replica of the property or the position of exterior elements. Plans should not be relied on. Interested parties should make and rely on their own enquiries.

105 PATERSON ROAD, SPRINGWOOD



INTERNAL
222 m²

EXTERNAL
98 m²

TOTAL
320 m²



The floor plan is not to scale; measurements are indicative and in metres. Exterior elements are not in position. Plans should not be relied on. Interested parties should make and rely on their own enquiries.