

3 Derain Crescent Hazelbrook NSW

3 1 1

LOCATION - Set on the high side of a quiet street, walking distance to bus stops and less than 1km to Hazelbrook shops, station and park.

STYLE - Original condition single level brick home with tile roof on a fabulous easy care 710m2 block.

LAYOUT - Light and bright open plan living & dining area flowing through to the kitchen then through to the laundry with convenient external access to rear yard, three bedrooms and updated central family bathroom.

FEATURES - Single carport, cosy kitchen, convenient internal laundry, low maintenance usable pocket of grassy backyard before the block slopes upwards with a bushy rear. This property is a low maintenance home, set on an easy care block, convenient to shops and services, equally ideal for investors, downsizers and first home buyers alike.

Price : \$730,000

Land Size : 710 sqm

View : <https://www.chapmanrealestate.com.au/sale/nsw/blue-mountains-surrounds/hazelbrook/residential/house/7906472>

* from 1st July 2023, conditions & eligibility criteria applies.

3 DERAINE CRESCENT, HAZELBROOK



INTERNAL
73 m²

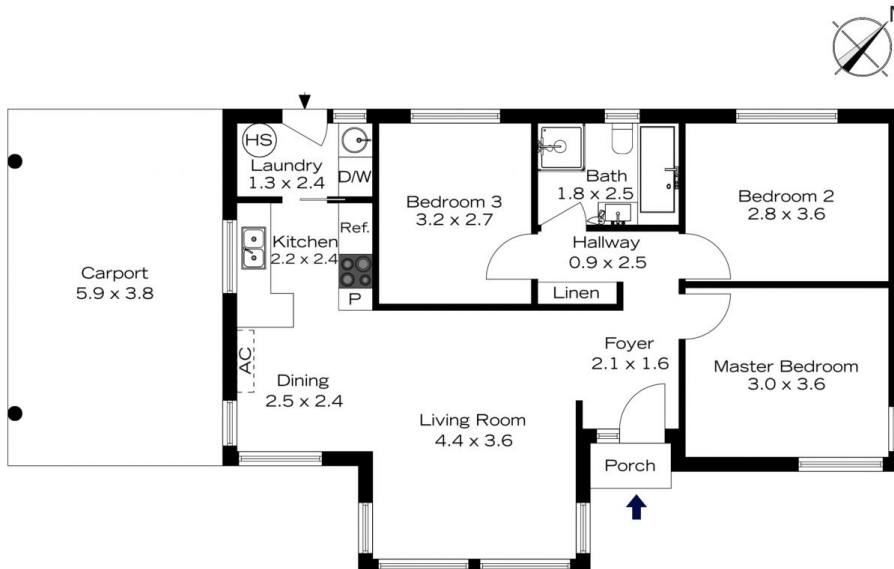
EXTERNAL
25 m²

TOTAL
98 m²



The floor plan is not to scale; measurements are indicative and in metres. All features included in this 3D plan are for inspiration purposes only. This is not an exact replica of the property or the position of exterior elements. Plans should not be relied on. Interested parties should make and rely on their own enquiries.

3 DERAINE CRESCENT, HAZELBROOK



INTERNAL
73 m²

EXTERNAL
25 m²

TOTAL
98 m²



The floor plan is not to scale; measurements are indicative and in metres. Exterior elements are not in position. Plans should not be relied on. Interested parties should make and rely on their own enquiries.