



10/56 Old Bathurst Road Blaxland NSW

2 1 1

LOCATION - Set in a highly sought after and well cared for complex, offering close and convenient pedestrian access to East Blaxland shops & public transport. There is a hairdresser, butcher, convenience store, take away options, coffee shop, petrol station and more just minutes from your doorstep. Blaxland station is only approx. 2km away and Penrith CBD is less than 8km drive away.

STYLE - This lovely villa is the perfect downsizer for those looking for a low maintenance lifestyle in the lower Blue Mountains. Offering single level living, this brick and tile roof over 55's villa is an easy to care for option.

LAYOUT - As you enter you will be immediately impressed with the space this villa offers. The living room opens on to the open plan kitchen and dining area, providing access to the internal laundry, single lock up garage and outdoor

Price : \$699,000 to \$749,000
Building Size : 97 sqm
Land Size : 97 sqm
View : <https://www.chapmanrealestate.com.au/sale/nsw/blue-mountains-surrounds/blaxland/residential/villa/7922670>



Chris Rayner
02 4739 6200

10/56 OLD BATHURST ROAD, BLAXLAND



INTERNAL
106 m²

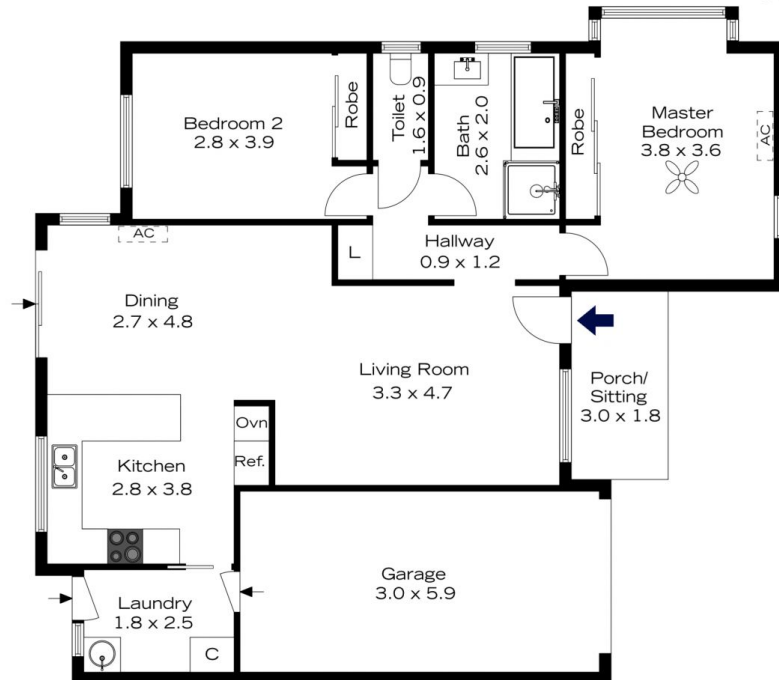
EXTERNAL
5 m²

TOTAL
111 m²



The floor plan is not to scale; measurements are indicative and in metres. All features included in this 3D plan are for inspiration purposes only. This is not an exact replica of the property or the position of exterior elements. Plans should not be relied on. Interested parties should make and rely on their own enquiries.

10/56 OLD BATHURST ROAD, BLAXLAND



INTERNAL
106 m²

EXTERNAL
5 m²

TOTAL
111 m²



The floor plan is not to scale; measurements are indicative and in metres. Exterior elements are not in position. Plans should not be relied on. Interested parties should make and rely on their own enquiries.