



43 Dawn Crescent Mount Riverview NSW

4 2 4

Address also known as 180a Rusden Road, Mount Riverview.

LOCATION - Sitting quietly on a fantastic 809m2 (approx.) corner block, this lovely family residence is located in the leafy suburb of Mount Riverview. Conveniently located within close proximity to primary schools, a pre school, general store, parks and café. There is a bus stop 120m from the home and the train station approximately 3km away, making commuting effortless. This location has everything the lower Blue Mountains has to offer.

STYLE -This single level brick veneer & tile home is instantly inviting with a lovely feel. Offering a neutral colour palate and a mix of Blackbutt & floating timber floors. There is nothing to do but move straight in.

Price : \$999,000 to \$1,049,000
Land Size : 809 sqm
View : <https://www.chapmanrealestate.com.au/sale/nsw/hawkesbury/mount-riverview/residential/house/7932200>

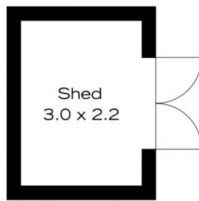


INTERNAL
109 m²

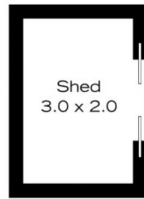
EXTERNAL
116 m²

TOTAL
225 m²

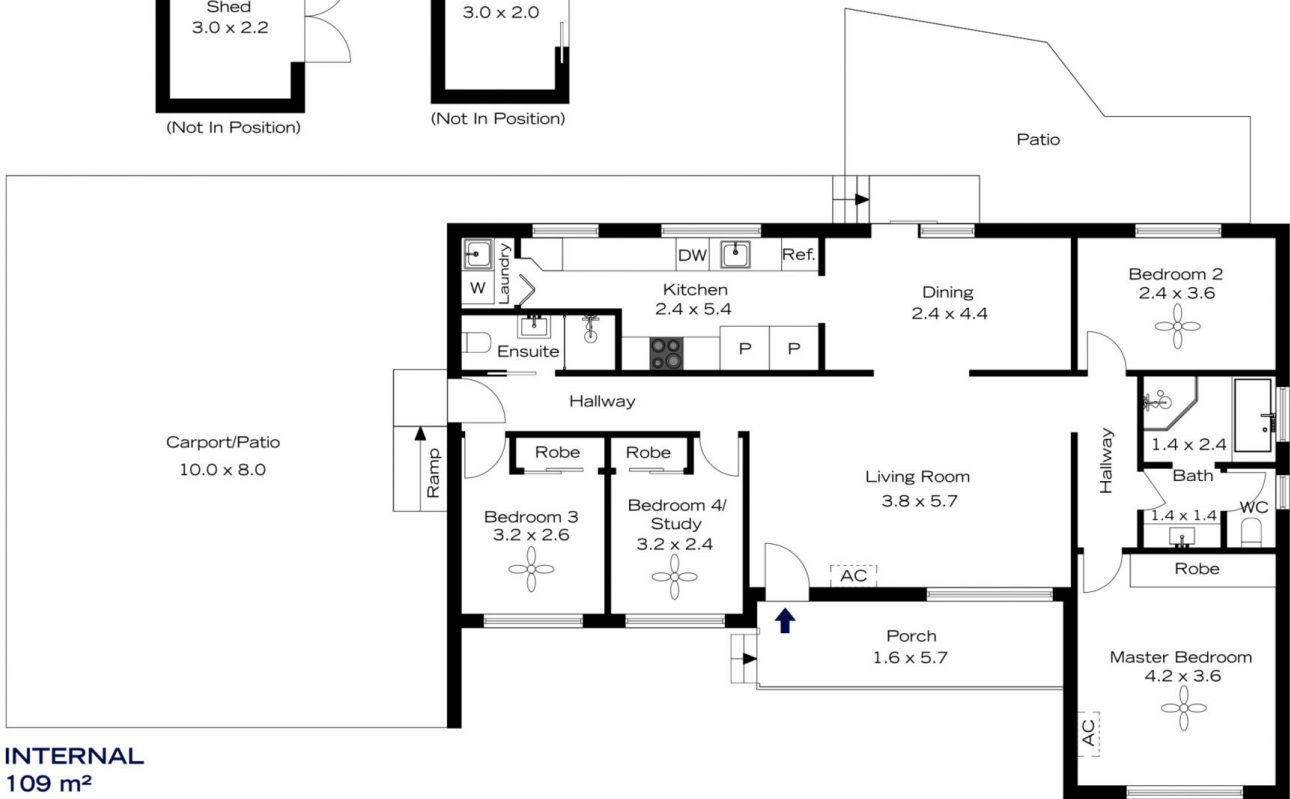
The floor plan is not to scale; measurements are indicative and in metres. All features included in this 3D plan are for inspiration purposes only. This is not an exact replica of the property or the position of exterior elements. Plans should not be relied on. Interested parties should make and rely on their own enquiries.



(Not In Position)



(Not In Position)



INTERNAL
109 m²

EXTERNAL
116 m²

TOTAL
225 m²

The floor plan is not to scale; measurements are indicative and in metres. Exterior elements are not in position. Plans should not be relied on. Interested parties should make and rely on their own enquiries.