



9 Myall Avenue Leura NSW

2 1 1

Access via the Great Western Highway.

LOCATION - Set amongst the bush this quaint mountains cottage is within 1.3kms of the popular cafes, shops, services and rail station of Leura village.

STYLE - Updated single level clad cottage with metal roof, set on a lovely 967m² (approx) bush block.

LAYOUT - Open plan living/dining, spacious modern kitchen, 2 bedrooms, Fully renovated bathroom with walk in shower and laundry, renovated bathroom and large deck for entertaining. Carport plus additional off street parking for 2 or more cars.

FEATURES - Charm of the Blue Mountains, this 1950's cottage has benefited from an upgrade to include a modern

Price : \$670,000 - \$720,000
Land Size : 967 sqm
View : <https://www.chapmanrealestate.com.au/sale/nsw/blue-mountains-surrounds/leura/residential/house/7947216>



Hayley Clifton
02 4758 8603

9 MYALL AVENUE, LEURA



INTERNAL
58 m²

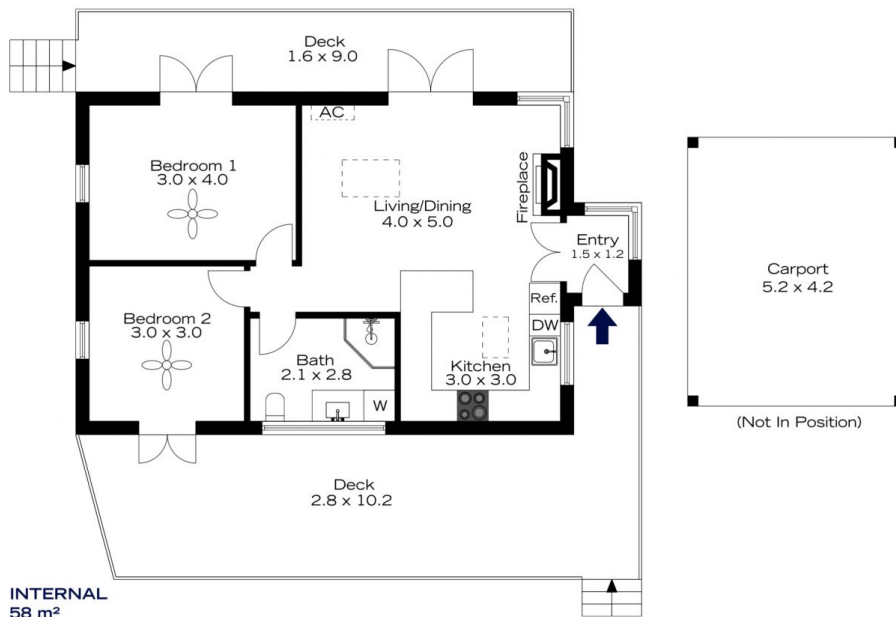
EXTERNAL
48 m²

TOTAL
106 m²



The floor plan is not to scale; measurements are indicative and in metres. All features included in this 3D plan are for inspiration purposes only. This is not an exact replica of the property or the position of exterior elements. Plans should not be relied on. Interested parties should make and rely on their own enquiries.

9 MYALL AVENUE, LEURA



INTERNAL
58 m²

EXTERNAL
48 m²

TOTAL
106 m²



The floor plan is not to scale; measurements are indicative and in metres. Exterior elements are not in position. Plans should not be relied on. Interested parties should make and rely on their own enquiries.