



49 Station Street Katoomba NSW

3 1 1

LOCATION - A wonderfully convenient location with a bus stop within approx. 120m and Katoomba train station a 650m walk. Enjoy being less than 1km to all the cafés, restaurants, stores, and amenities Katoomba town centre offers and with easy access to the Highway this home's setting, in its tree lined street, is suitable for all.

STYLE - A refreshed brick veneer and tile roof family home proudly occupying an elevated position. With a fresh painted neutral colour palette and modernised kitchen and bathroom the home is ready to welcome you.

LAYOUT - With a lovely entry way to greet you the home then opens to a light filled living space, with floor to ceiling windows, that overlook the lush green front yard and treescape. An adjacent formal dining room then leads to the central kitchen with casual meals area and then

Price : \$770,000 to \$810,000
Land Size : 614 sqm
View : <https://www.chapmanrealestate.com.au/sale/nsw/blue-mountains-surrounds/katoomba/residential/house/7947995>

49 STATION STREET, KATOOMBA



INTERNAL
119 m²

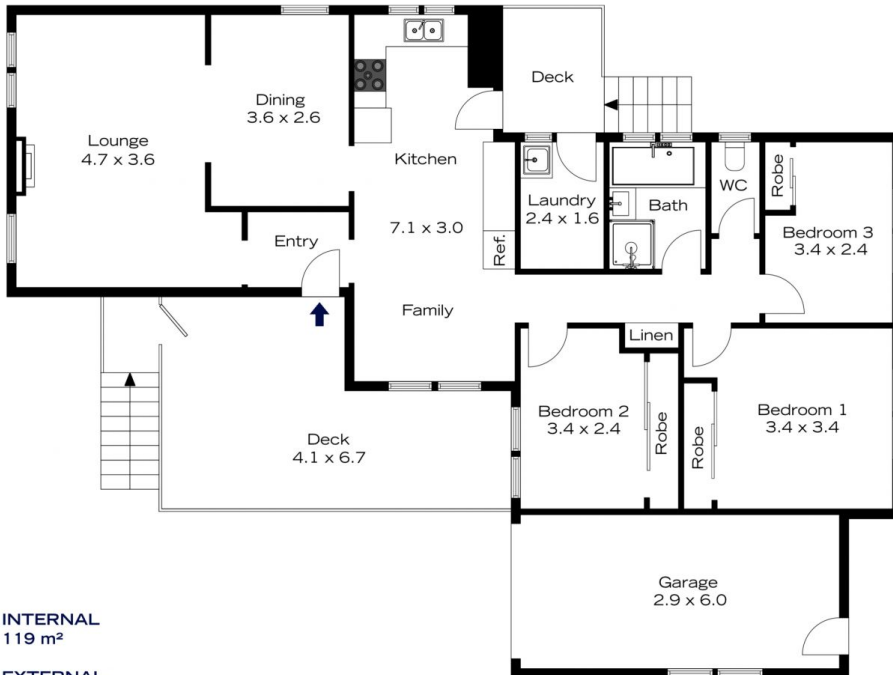
EXTERNAL
27 m²

TOTAL
146 m²



The floor plan is not to scale; measurements are indicative and in metres. All features included in this 3D plan are for inspiration purposes only. This is not an exact replica of the property or the position of exterior elements. Plans should not be relied on. Interested parties should make and rely on their own enquiries.

49 STATION STREET, KATOOMBA



INTERNAL
119 m²

EXTERNAL
27 m²

TOTAL
146 m²



The floor plan is not to scale; measurements are indicative and in metres. Exterior elements are not in position. Plans should not be relied on. Interested parties should make and rely on their own enquiries.