



28 Ellison Road Springwood NSW

4 2 3

LOCATION - This fantastic property is located close to amenities including schools, train station and Springwood Village. Springwood Golf & Country Club is only 2 minutes by car, and access to the M4 Motorway is quick and easy, only 2.5km away from home, making access to the upper Mountains, lower Mountains and Penrith CBD.

Price : \$ 930,000
Land Size : 1178 sqm
View : <https://www.chapmanrealestate.com.au/sale/nsw/hawkesbury/springwood/residential/homeuse/7955405>

STYLE - This solid, double brick home features a mix of rendered and exposed brick internally. There is a beautiful sun-lit space off the dining room, offering lovely natural light in the area.

The kitchen is in great condition, with plenty of storage space in the timber cupboards. This home has fantastic bones and a generous floorplan.

LAYOUT - Upon entry you instantly sense you are peacefully tucked away as you look out to trees beyond.

28 ELLISON ROAD, SPRINGWOOD



Ground Floor

INTERNAL
136 m²

EXTERNAL
259 m²

TOTAL
395 m²

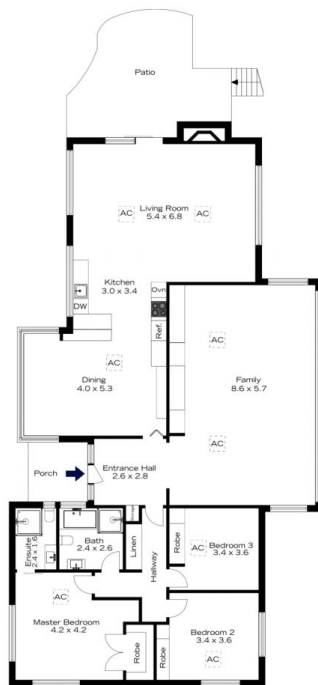


Lower Ground Floor



The floor plan is not to scale; measurements are indicative and in metres. All features included in this 3D plan are for inspiration purposes only. This is not an exact replica of the property or the position of exterior elements. Plans should not be relied on. Interested parties should make and rely on their own enquiries.

28 ELLISON ROAD, SPRINGWOOD

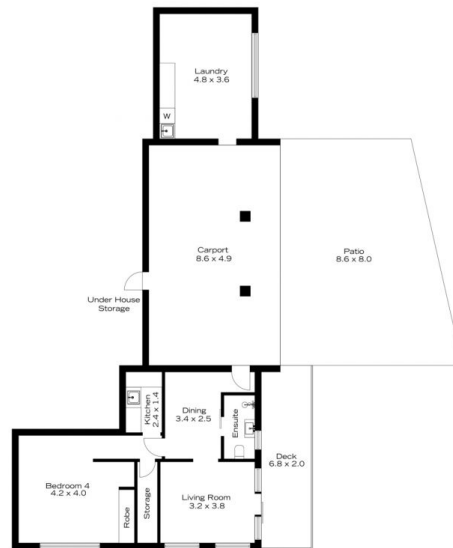


Ground Floor

INTERNAL
136 m²

EXTERNAL
259 m²

TOTAL
395 m²



Lower Ground Floor



The floor plan is not to scale; measurements are indicative and in metres. Exterior elements are not in position. Plans should not be relied on. Interested parties should make and rely on their own enquiries.