



22 Tall Timbers Road Winmalee NSW

3 2 2

LOCATION - Peacefully located in the family friendly suburb of Winmalee this home has a sunny position and leafy backdrop. Winmalee Shopping Village, amenities & a choice of schools are close by, a bus stop within approximately 300m, and a short drive to Springwood, this home represents a quiet, relaxed, and easy lifestyle.

Price : \$ 850,000
Land Size : 724 sqm
View : <https://www.chapmanrealestate.com.au/sale/nsw/hawkesbury/winmalee/residential/house/7962352>

STYLE - Loads of character and some original features, this comfortable single level brick & tile home comes complete with a single lock up garage, carport, and fantastic level backyard.

LAYOUT - The charm begins at the front door where you are instantly greeted by a family friendly layout. Three great sized bedrooms, the main with an ensuite, and a family bathroom located close by. A separate formal lounge room, adjoining to the open plan kitchen, dining and study

22 TALL TIMBERS ROAD, WINMALEE



INTERNAL
132 m²

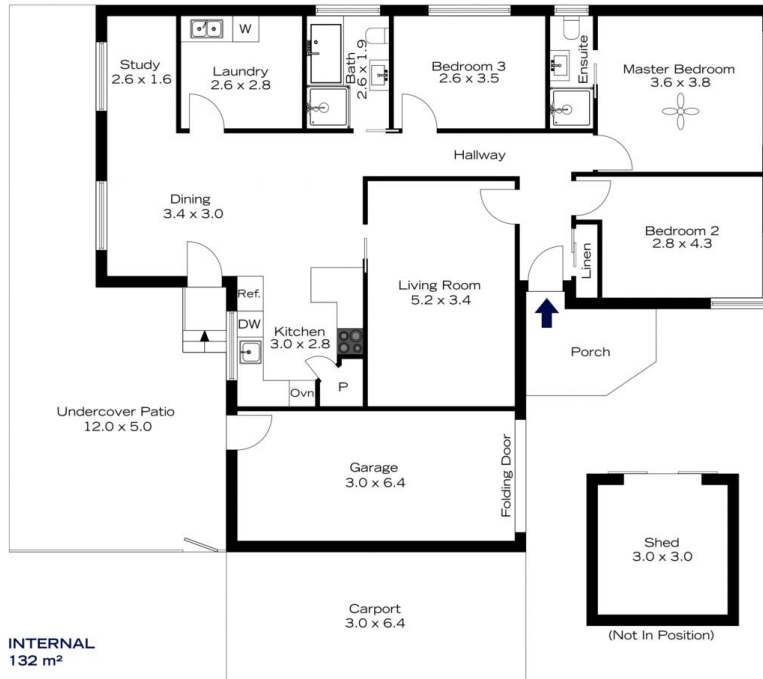
EXTERNAL
70 m²

TOTAL
202 m²



The floor plan is not to scale; measurements are indicative and in metres. All features included in this 3D plan are for inspiration purposes only. This is not an exact replica of the property or the position of exterior elements. Plans should not be relied on. Interested parties should make and rely on their own enquiries.

22 TALL TIMBERS ROAD, WINMALEE



INTERNAL
132 m²

EXTERNAL
70 m²

TOTAL
202 m²



The floor plan is not to scale; measurements are indicative and in metres. Exterior elements are not in position. Plans should not be relied on. Interested parties should make and rely on their own enquiries.