



**21 Morven Road Leura NSW**

4 2 2

**LOCATION** - This enticing opportunity exists in a premium locale, proximate to the ever esteemed Leura village, while residing in a tranquil, tree lined pocket to enjoy the serenity this tree change can offer you. Bask in the knowledge you are moments away to revered cafes, restaurants, antique and boutique stores, as well as everyday necessities.

**STYLE** - This freshly rejuvenated, light and bright home is a welcoming single level, brick built, haven. Proudly sitting amongst 801sqm (approx.) of beautifully landscaped land you will appreciate the contemporary finishes which allow you to move right in.

**LAYOUT** - Feel instantly at home, arriving in to your entrance hall and soaking up the natural light that streams through and follows in to the large living area, featuring a

**Price** : Contact Agent  
**Land Size** : 801 sqm  
**View** : <https://www.chapmanrealestate.com.au/sale/nsw/blue-mountains-surrounds/leura/residential/house/7962376>

# 21 MORVEN ROAD, LEURA



**INTERNAL**  
216 m<sup>2</sup>

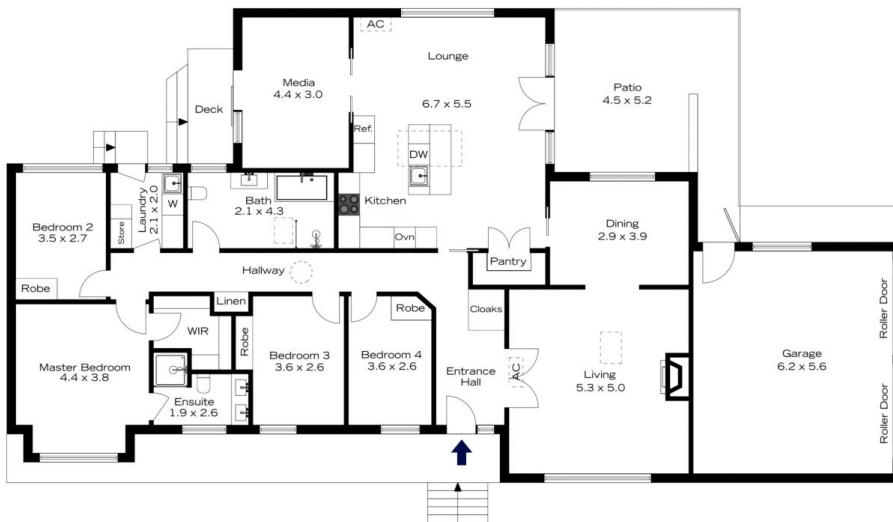
**EXTERNAL**  
52 m<sup>2</sup>

**TOTAL**  
268 m<sup>2</sup>



The floor plan is not to scale; measurements are indicative and in metres. All features included in this 3D plan are for inspiration purposes only. This is not an exact replica of the property or the position of exterior elements. Plans should not be relied on. Interested parties should make and rely on their own enquiries.

# 21 MORVEN ROAD, LEURA



**INTERNAL**  
216 m<sup>2</sup>

**EXTERNAL**  
52 m<sup>2</sup>

**TOTAL**  
268 m<sup>2</sup>



The floor plan is not to scale; measurements are indicative and in metres. Exterior elements are not in position. Plans should not be relied on. Interested parties should make and rely on their own enquiries.