



## 9 Cathy Street Blaxland NSW

4 2 1

**LOCATION** - This modernised four bedroom home is positioned in a lovely serene pocket of Blaxland. Glenbrook Lagoon is around the corner, offering a perfect walking track and tranquil bush setting close to home. There are schools, shops, restaurants and pubs all within a few minutes' drive. Blaxland Station is only 3 minutes by car, making the commute to work quick and easy. Glenbrook village offers parks, shops, restaurants and more as well as the entrance to Glenbrook National Park - all of this is only 2.3km away.

**STYLE:** Fresh & modern this single level home is of brick and tile construction and occupies a level 627m<sup>2</sup> approx. parcel of land.

**LAYOUT:** An easy flow floor plan boasts four good sized bedrooms, ensuite to main & family bathroom centrally

**Price** : UNDER CONTRACT  
**Land Size** : 601 sqm  
**View** : <https://www.chapmanrealestate.com.au/sale/nsw/blue-mountains-surrounds/blaxland/residential/house/7982740>

9 CATHY STREET, BLAXLAND



**INTERNAL**  
160 m<sup>2</sup>

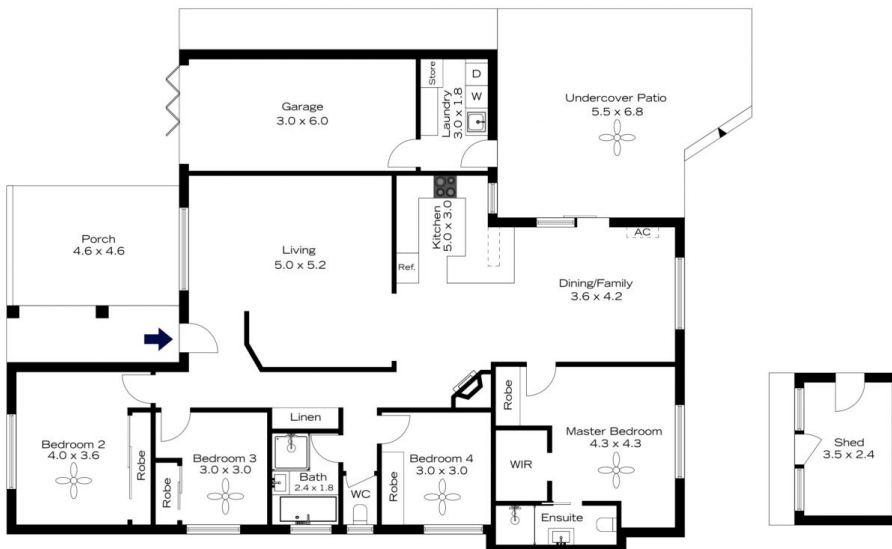
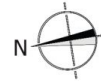
**EXTERNAL**  
64 m<sup>2</sup>

**TOTAL**  
224 m<sup>2</sup>



The floor plan is not to scale; measurements are indicative and in metres. All features included in this 3D plan are for inspiration purposes only. This is not an exact replica of the property or the position of exterior elements. Plans should not be relied on. Interested parties should make and rely on their own enquiries.

9 CATHY STREET, BLAXLAND



**INTERNAL**  
160 m<sup>2</sup>

**EXTERNAL**  
64 m<sup>2</sup>

**TOTAL**  
224 m<sup>2</sup>



The floor plan is not to scale; measurements are indicative and in metres. Exterior elements are not in position. Plans should not be relied on. Interested parties should make and rely on their own enquiries.