



95 Burns Road Springwood NSW

3 1 2

LOCATION - Beautifully located on popular 'Springwood's South Side', conveniently positioned just moments to local tennis centre, walking distance (850m) to sought after primary school, 2.2km to train, within 1.8km to village cafes, services and shopping precinct and all with an incredible bush outlook of Sassafras Gully to the rear.

Price : \$840,000 - \$880,000
Land Size : 873 sqm
View : <https://www.chapmanrealestate.com.au/sale/nsw/hawkesbury/springwood/residential/home/7990825>

STYLE - Updated single level brick home with tile roof on a generous, usable and mainly level 873m2 (approx.) block with bright & sunny aspect, plus side vehicle access to detached double lock up garage.

LAYOUT - Large open plan living, kitchen and dining area, three bedrooms, all with built in robes, renovated (new in 2021) central bathroom, laundry with external access, large outdoor entertaining area with stunning bush outlook at the rear.

95 BURNS ROAD, SPRINGWOOD



INTERNAL
90 m²

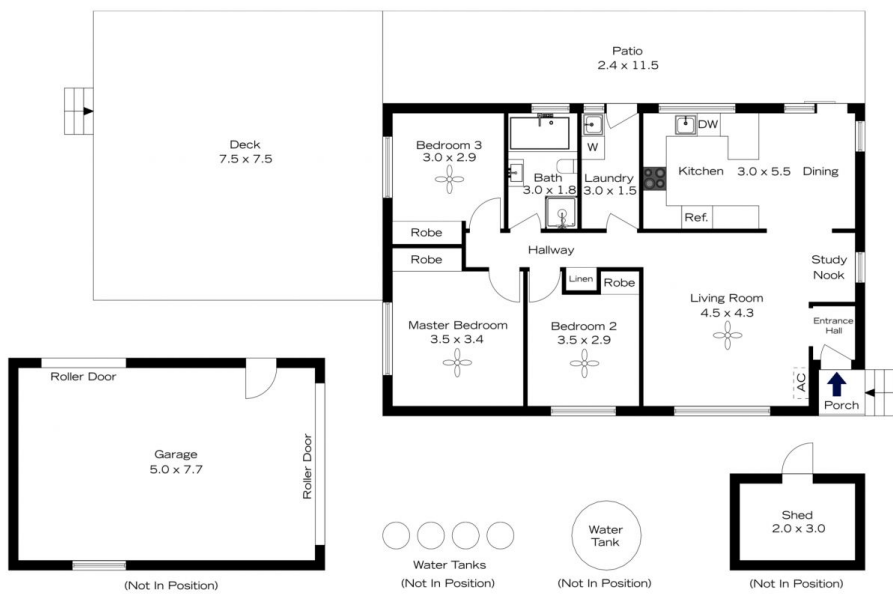
EXTERNAL
88 m²

TOTAL
178 m²



The floor plan is not to scale; measurements are indicative and in metres. All features included in this 3D plan are for inspiration purposes only. This is not an exact replica of the property or the position of exterior elements. Plans should not be relied on. Interested parties should make and rely on their own enquiries.

95 BURNS ROAD, SPRINGWOOD



INTERNAL
90 m²

EXTERNAL
88 m²

TOTAL
178 m²



The floor plan is not to scale; measurements are indicative and in metres. Exterior elements are not in position. Plans should not be relied on. Interested parties should make and rely on their own enquiries.