



6 Baringa Street Blaxland NSW

4 3 3

LOCATION - Sitting peacefully tucked away in a quiet and highly desired cul-de-sac, yet close to everything with a short 450m (approx.) stroll to Blaxland station and pedestrian overpass to shops, cafes, restaurants & medical centre, and with schools, parks, bush walks and more at your convenience.

STYLE - Offered to market for the very first time, this much loved light and airy, original brick and tile family home proudly sits on a magical 2,725sqm (approx.) parcel of useable land with gorgeous bush outlook. Anticipating its new family with their fresh ideas, it's packed with potential both inside and out, and presents an amazing opportunity in a sought-after pocket of Blaxland.

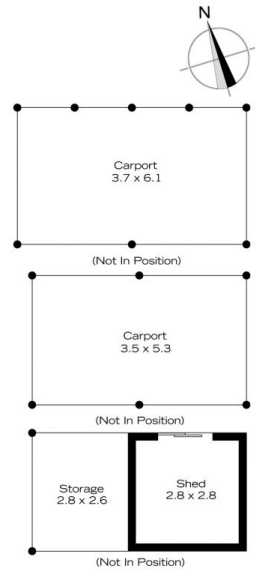
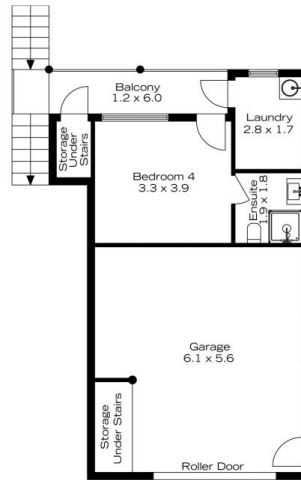
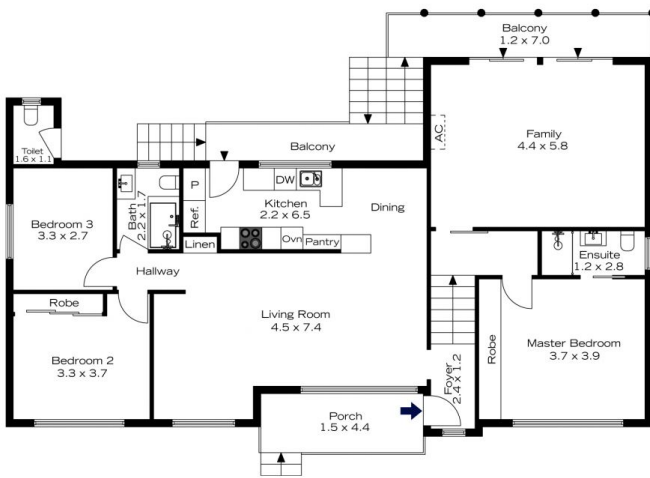
LAYOUT - The ground floor encompasses a spacious living room, dining off the kitchen overlooking the yard, 2 bedrooms (original master with built-in-robe) and a neat & tidy family bathroom. Upstairs the property features a

Price : \$1,300,000 - \$1,400,000
Building Size : 187 sqm
Land Size : 2725 sqm
View : <https://www.chapmanrealestate.com.au/sale/nsw/blue-mountains-surrounds/blaxland/residential/house/7995898>



Glen Power
02 4739 4311

6 BARINGA STREET, BLAXLAND

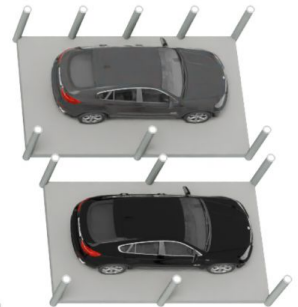


INTERNAL
187 m²
EXTERNAL
28 m²
TOTAL
215 m²



The floor plan is not to scale; measurements are indicative and in metres. Exterior elements are not in position. Plans should not be relied on. Interested parties should make and rely on their own enquiries.

6 BARINGA STREET, BLAXLAND



INTERNAL
187 m²
EXTERNAL
28 m²
TOTAL
215 m²



The floor plan is not to scale; measurements are indicative and in metres. All features included in this 3D plan are for inspiration purposes only. This is not an exact replica of the property or the position of exterior elements. Plans should not be relied on. Interested parties should make and rely on their own enquiries.