

### 10 Wattlecliffe Drive Blaxland NSW

5 2 2

**LOCATION** - In a hidden pocket of Blaxland, this sought after private estate is ideally located for easy access to the Great Western Highway, while within walking distance to all of Blaxland's great conveniences, day care, shops, transport, restaurants, bushwalks and fitness facilities.

**STYLE** - Spread over two levels, this immaculate & contemporary brick and tile home is set on an approx 527m<sup>2</sup> landscaped block.

**LAYOUT** - Stunning and generously proportioned family living room leading to a contemporary kitchen and dining room, 5 large bedrooms (master with walk in wardrobe and ensuite), 2.5 bathrooms, alfresco.

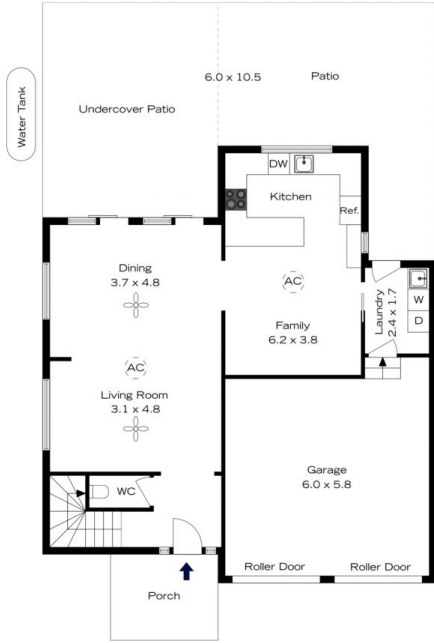
**FEATURES** - Chef's style kitchen with stone bench tops, ample bench and storage space, induction cook top,

**Price** : \$1,150,000 - \$1,200,000  
**Land Size** : 527.2 sqm  
**View** : <https://www.chapmanrealestate.com.au/sale/nsw/blue-mountains-surrounds/blaxland/residential/house/8003144>



**Sarah Watson**  
02 4739 4311

# 10 WATTLECLIFFE DRIVE, BLAXLAND

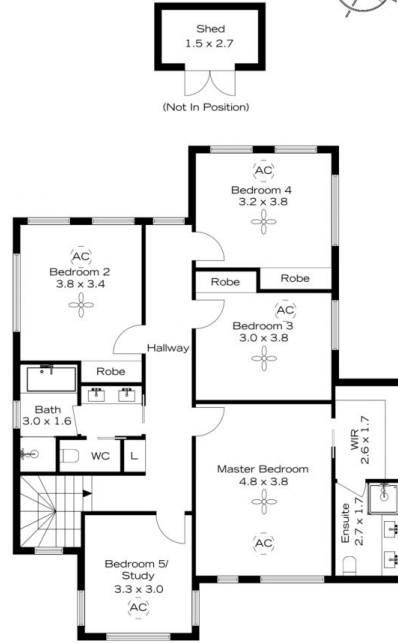


Ground Floor  
INTERNAL  
208 m<sup>2</sup>

EXTERNAL  
67 m<sup>2</sup>

TOTAL  
275 m<sup>2</sup>

The floor plan is not to scale; measurements are indicative and in metres. Exterior elements are not in position. Plans should not be relied on. Interested parties should make and rely on their own enquiries.



First Floor

# 10 WATTLECLIFFE DRIVE, BLAXLAND



Ground Floor

INTERNAL  
208 m<sup>2</sup>

EXTERNAL  
67 m<sup>2</sup>

TOTAL  
275 m<sup>2</sup>

The floor plan is not to scale; measurements are indicative and in metres. All features included in this 3D plan are for inspiration purposes only. This is not an exact replica of the property or the position of exterior elements. Plans should not be relied on. Interested parties should make and rely on their own enquiries.



First Floor