



3 Statham Avenue Falconbridge NSW

3 1 1

LOCATION - Ideally positioned in a very sought after area within 1km (or less) of local shops, public & high schools and moments from Buttenshaw Park & Springwood Aquatic Centre.

STYLE - Single level brick home with restored tile roof set down driveway on generous block of 822 m² (approx.) with stunning bush outlook.

LAYOUT - Open plan living, kitchen & dining area which flows along hallway to 3 bedrooms all with built in robes, central family bathroom with convenient separate toilet, converted single lock up garage with internal access, currently set up as second living space (or 4th bedroom) with separate storage area and access to laundry.

FEATURES - Central kitchen with light and neutral tones, electric cooking and integrated dishwasher, reverse cycle

Type : House
Price : \$ 815,000
Land Size : 822 sqm
View : <https://www.chapmanrealestate.com.au/sale/nsw/hawkesbury/falconbridge/residential/house/8016113>

[For full version visit the website](#)

<https://www.chapmanrealestate.com.au>

3 STATHAM AVENUE, FAULCONBRIDGE



INTERNAL
113 m²

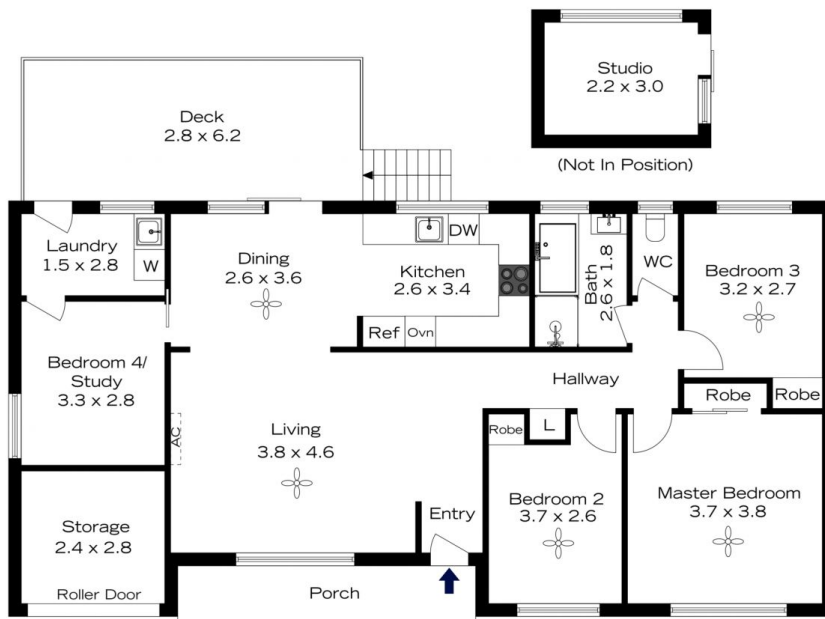
EXTERNAL
26 m²

TOTAL
139 m²



The floor plan is not to scale; measurements are indicative and in metres. All features included in this 3D plan are for inspiration purposes only. This is not an exact replica of the property or the position of exterior elements. Plans should not be relied on. Interested parties should make and rely on their own enquiries.

3 STATHAM AVENUE, FAULCONBRIDGE



INTERNAL
113 m²

EXTERNAL
26 m²

TOTAL
139 m²



The floor plan is not to scale; measurements are indicative and in metres. Exterior elements are not in position. Plans should not be relied on. Interested parties should make and rely on their own enquiries.