



### 37 Cross Street Warrimoo NSW

3 2 2

**LOCATION** - Situated in one of the suburbs most sought after streets on a glorious 999sqm (approximate) bush block. A near level walk to Warrimoo Station (approx. 1.1km), ovals, bushwalks, tennis courts and school.

**STYLE** - Stunning 2 storey Appalachian home: Timeless masterpiece of meticulous craftsmanship, seamlessly blending the indoors with the natural beauty outside. Entertain to your hearts content with multiple decks, meandering pathways, gazebo and firepit or retreat upstairs to the quiet and serenity, offering a haven to escape and admire the natural surroundings.

**ACCOMMODATION** - Entry level floor plan: Open concept kitchen with sitting & dining room adjacent, opening onto a

**Type** : House  
**Price** : \$ 1,220,000  
**Land Size** : 999.1 sqm  
**View** : <https://www.chapmanrealestate.com.au/sale/nsw/hawkesbury/warrimoo/residential/house/8017094>



**Tennille Haddock**  
02 4739 4311

[For full version visit the website](https://www.chapmanrealestate.com.au)

<https://www.chapmanrealestate.com.au>



# 37 CROSS ST, WARRIMOO



Lower Level

**INTERNAL**  
124 m<sup>2</sup>

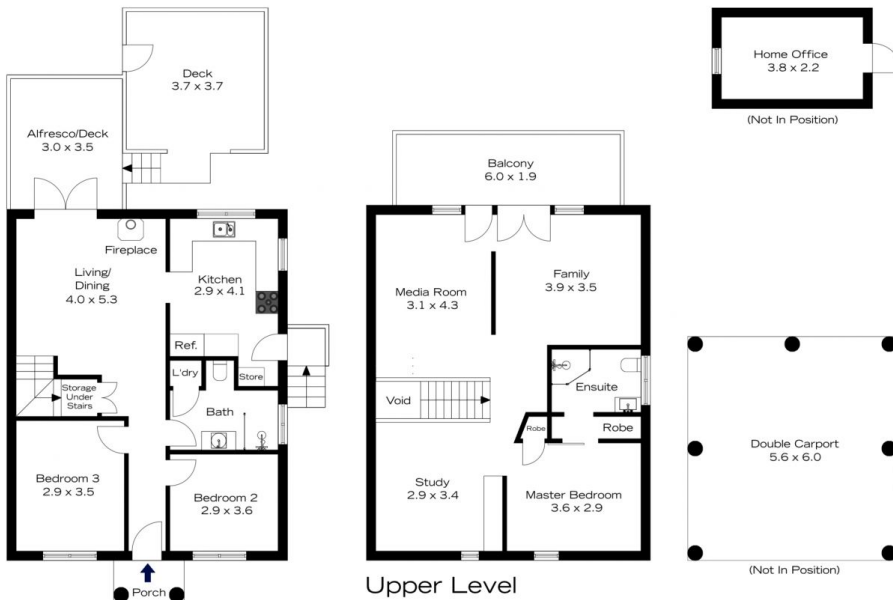
**EXTERNAL**  
44 m<sup>2</sup>

**TOTAL**  
168 m<sup>2</sup>



The floor plan is not to scale; measurements are indicative and in metres. All features included in this 3D plan are for inspiration purposes only. This is not an exact replica of the property or the position of exterior elements. Plans should not be relied on. Interested parties should make and rely on their own enquiries.

# 37 CROSS ST, WARRIMOO



Lower Level

**INTERNAL**  
124 m<sup>2</sup>

**EXTERNAL**  
44 m<sup>2</sup>

**TOTAL**  
168 m<sup>2</sup>



The floor plan is not to scale; measurements are indicative and in metres. Exterior elements are not in position. Plans should not be relied on. Interested parties should make and rely on their own enquiries.