



41 Roger Crescent Mount Riverview NSW

3 1 1

LOCATION - Positioned in a highly sought after & quiet location with shops, parks, school, daycare and cafes are all within (approx) 1.9km distance. Offering quick and easy access to public transport and local bush walks right on your doorstep.

STYLE - Single level mountains cottage nestled on a completely flat 652m2 block (approx). offering privacy and rear access.

LAYOUT: Lovingly presented throughout offering 3 bedrooms all with built-in robes, spacious living room, quaint & bright kitchen flowing to a dining/living room, main family bathroom, lovingly maintained garden, internal laundry with additional toilet.

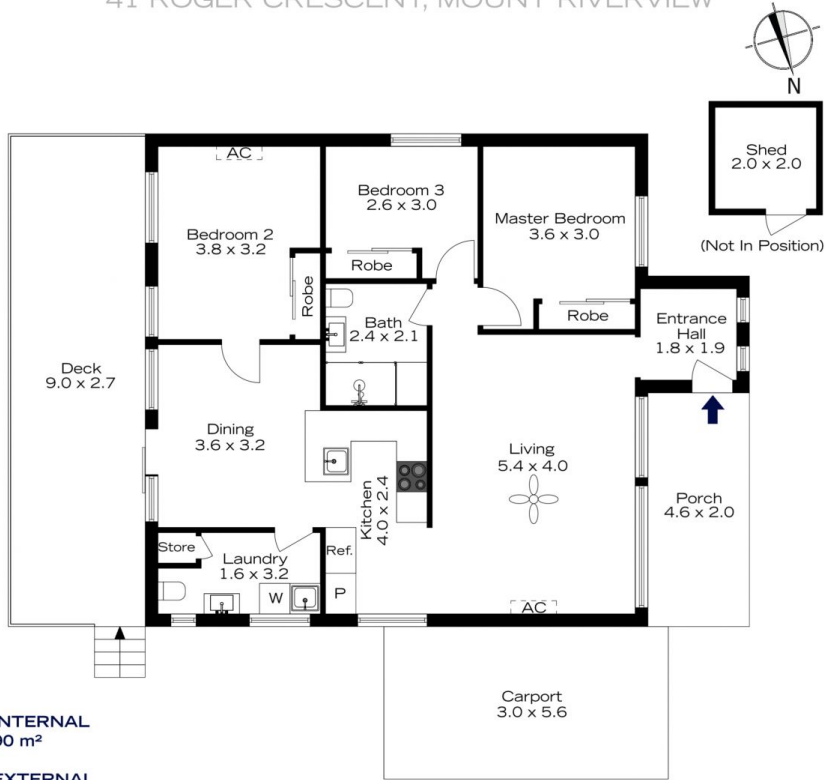
[For full version visit the website](https://www.chapmanrealestate.com.au)

Type : House
Price : \$ 885,000
Land Size : 651.3 sqm
View : <https://www.chapmanrealestate.com.au/sale/nsw/hawkesbury/mount-riverview/residential/house/8074278>



Sarah Watson
02 4739 4311

41 ROGER CRESCENT, MOUNT RIVERVIEW



INTERNAL
90 m²

EXTERNAL
52 m²

TOTAL
142 m²

The floor plan is not to scale; measurements are indicative and in metres. Exterior elements are not in position. Plans should not be relied on. Interested parties should make and rely on their own enquiries.

41 ROGER CRESCENT, MOUNT RIVERVIEW



INTERNAL
90 m²

EXTERNAL
52 m²

TOTAL
142 m²

The floor plan is not to scale; measurements are indicative and in metres. All features included in this 3D plan are for inspiration purposes only. This is not an exact replica of the property or the position of exterior elements. Plans should not be relied on. Interested parties should make and rely on their own enquiries.