



107 Burns Road Springwood NSW

3 1 1

LOCATION - Located on the ever popular south side of Springwood, within 2km to Springwood Train Station, Springwood Village, services, cafes and a short walk to Springwood Public School and various bush trails.

STYLE - Single level clad Mountain's Cottage home with colorbond roof, located in a prime location, filled with natural sunlight, lush established private garden and tranquil bush views.

LAYOUT - Generous living area, separate dining/2nd living area, 3 bedrooms (1 with built in), bathroom, renovated kitchen and internal laundry area.

FEATURES - Renovated kitchen with stainless appliances, timber flooring throughout, 2 x split reverse cycle A/C systems, spacious timber covered deck area that is perfect for entertaining and/or family time, overlooking a gorgeous

Type : House
Price : \$ 880,000
Land Size : 923.2 sqm
View : <https://www.chapmanrealestate.com.au/sale/nsw/hawkesbury/springwood/residential/ho use/8152075>

[For full version visit the website](#)

<https://www.chapmanrealestate.com.au>

107 BURNS ROAD, SPRINGWOOD



INTERNAL
88 m²

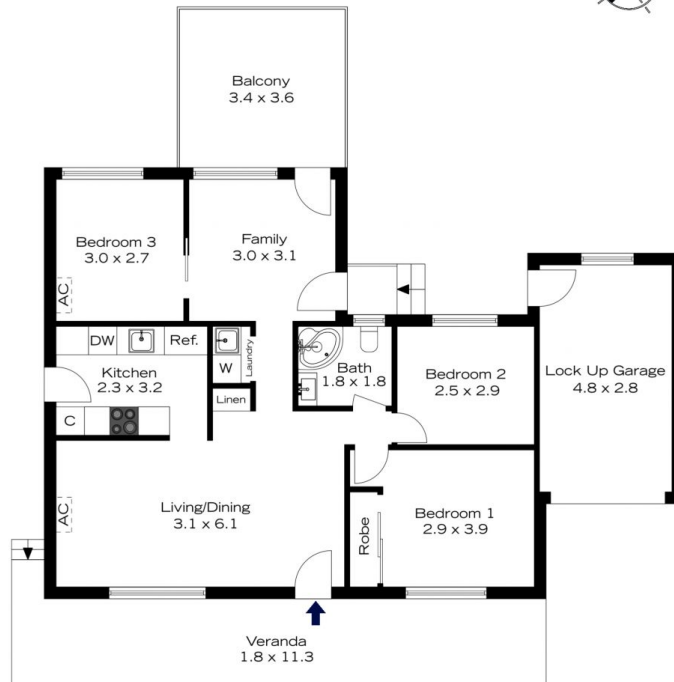
EXTERNAL
34 m²

TOTAL
122 m²



The floor plan is not to scale; measurements are indicative and in metres. All features included in this 3D plan are for inspiration purposes only. This is not an exact replica of the property or the position of exterior elements. Plans should not be relied on. Interested parties should make and rely on their own enquiries.

107 BURNS ROAD, SPRINGWOOD



INTERNAL
88 m²

EXTERNAL
34 m²

TOTAL
122 m²



The floor plan is not to scale; measurements are indicative and in metres. Exterior elements are not in position. Plans should not be relied on. Interested parties should make and rely on their own enquiries.