



## 11/92-110 Lalor Drive Springwood NSW

2 1 1

**LOCATION** - Ideally located in a peaceful, like-minded community, in close proximity to bush walks and nature trails, approx. 180 meters from a bus stop, and with vibrant Springwood village with its cafes, restaurants, shops, pubs, club and rail only approx. 3.5km away.

**STYLE** - Immaculately presented, single storey brick and tile over 55s villa with north facing views from the sun-drenched veranda with paved courtyard and private rear garden.

**LAYOUT** - Light filled with fresh interiors, generous open plan living and dining, cozy kitchen overlooking the rear garden, two great sized bedrooms with built-in-robos, family bathroom, internal laundry and single garage.

**FEATURES** - Greeted by established gardens and the tiled front porch, the home is filled with a calming energy and a

<b>Type</b>	: Villa
<b>Price</b>	: \$ 660,000
<b>Building Size</b>	: 86 sqm
<b>Land Size</b>	: 170 sqm
<b>View</b>	: <a href="https://www.chapmanrealestate.com.au/sale/nsw/hawkesbury/springwood/residential/villa/8202313">https://www.chapmanrealestate.com.au/sale/nsw/hawkesbury/springwood/residential/villa/8202313</a>

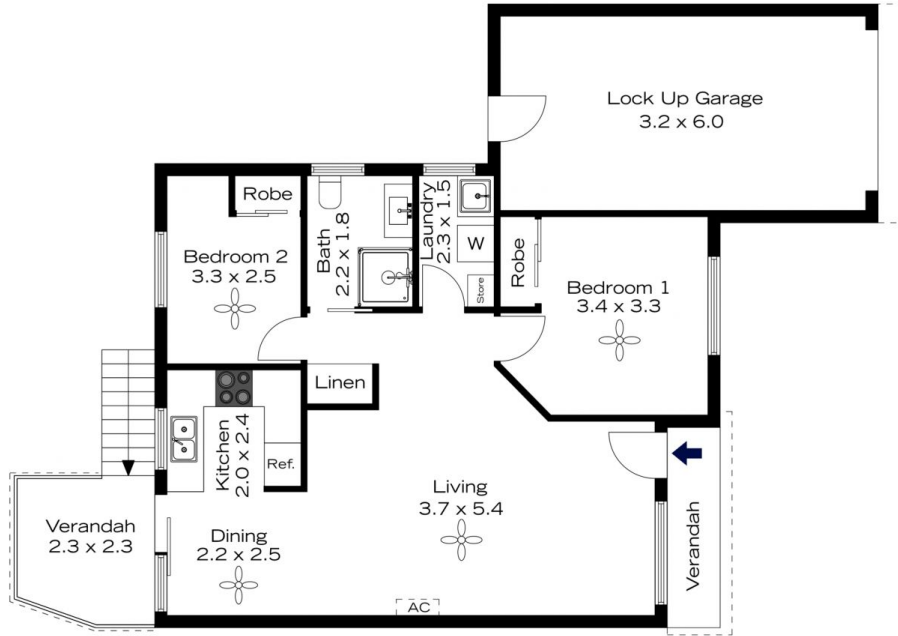


**Glen Power**  
02 4720 4244

[For full version visit the website](https://www.chapmanrealestate.com.au)

<https://www.chapmanrealestate.com.au>

# 11/92-110 LALOR DRIVE, SPRINGWOOD



**INTERNAL**  
78 m<sup>2</sup>

**EXTERNAL**  
8 m<sup>2</sup>

**TOTAL**  
86 m<sup>2</sup>



The floor plan is not to scale; measurements are indicative and in metres. Exterior elements are not in position. Plans should not be relied on. Interested parties should make and rely on their own enquiries.

# 11/92-110 LALOR DRIVE, SPRINGWOOD



**INTERNAL**  
78 m<sup>2</sup>

**EXTERNAL**  
8 m<sup>2</sup>

**TOTAL**  
86 m<sup>2</sup>



The floor plan is not to scale; measurements are indicative and in metres. All features included in this 3D plan are for inspiration purposes only. This is not an exact replica of the property or the position of exterior elements. Plans should not be relied on. Interested parties should make and rely on their own enquiries.