

2/21 Park Street Glenbrook NSW

2 1

LOCATION - Ideally set in a very tightly held and well cared for complex in the heart of Glenbrook village. Only 46 metres (approximately) to the nearest cafe! Stroll to shops, restaurants, supermarket, cinema, tennis courts, playground, oval, rail services and bus.

STYLE - North facing, quaint, single level unit with a garden cottage feel. Offering an ultra-convenient, low maintenance lifestyle. Of brick and Colorbond roof construction. A wonderful downsizer, perfect opportunity for a first home buyer, investor or use as a weekender!

LAYOUT - Spacious, open plan living and dining room. Two bedrooms that includes a sun-lit primary with built-in-robe. Large bathroom incorporating essential

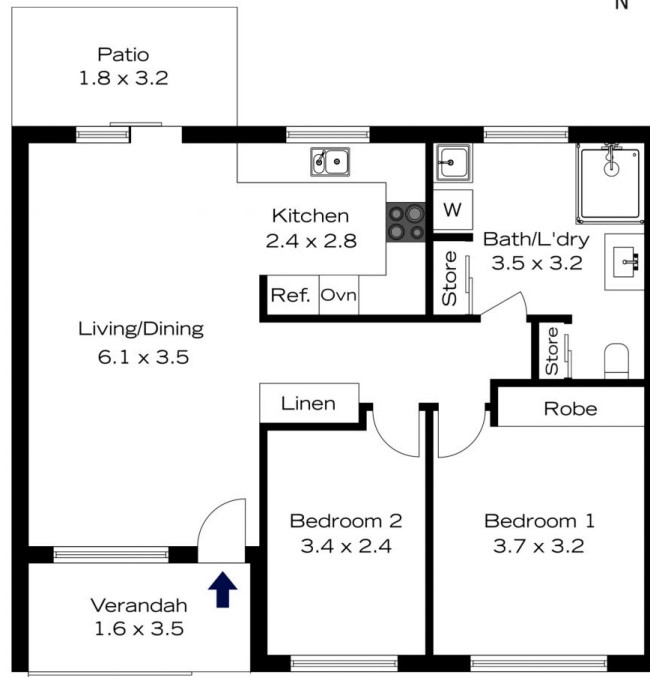
[For full version visit the website](https://www.chapmanrealestate.com.au)

Type : Unit
Price : \$ 835,000
Building Size : 109 sqm
View : <https://www.chapmanrealestate.com.au/sale/nsw/blue-mountains-surrounds/glenbrook/residential/unit/8386350>



Tennille Haddock
02 4739 4311

2 / 21 PARK STREET, GLENBROOK



INTERNAL
75 m²

EXTERNAL
12 m²

TOTAL
87 m²



The floor plan is not to scale; measurements are indicative and in metres. Exterior elements are not in position. Plans should not be relied on. Interested parties should make and rely on their own enquiries.

2 / 21 PARK STREET, GLENBROOK



INTERNAL
75 m²

EXTERNAL
12 m²

TOTAL
87 m²



The floor plan is not to scale; measurements are indicative and in metres. All features included in this 3D plan are for inspiration purposes only. This is not an exact replica of the property or the position of exterior elements. Plans should not be relied on. Interested parties should make and rely on their own enquiries.