



60 Hay Street Lawson NSW

2 1 1

LOCATION: Nestled in the serene Blue Mountains, this property offers a tranquil lifestyle with easy access to local amenities. Enjoy the convenience of nearby shops, public transport, and schools, all within a welcoming community.

STYLE: This charming single-level weatherboard cottage sits on a generous 1,441.7m² (approx.) block. Recently renovated, it seamlessly blends modern updates with classic mountain charm, offering a warm and inviting atmosphere.

LAYOUT: The home features a spacious living area and dining space that flows into a contemporary cottage kitchen. It comprises two well-sized bedrooms with built-in wardrobes, a stylish and updated bathroom, and an internal

Type : House
Price : \$ 755,000
Land Size : 1441.7 sqm
View : <https://www.chapmanrealestate.com.au/sale/nsw/blue-mountains-surrounds/lawson/residential/house/8389628>



Samuel McGrath
02 4751 8266



Hayley Clifton
02 4758 8603

[For full version visit the website](https://www.chapmanrealestate.com.au)

<https://www.chapmanrealestate.com.au>

60 HAY STREET, LAWSON



Ground Floor



Lower Ground Floor

INTERNAL
67 m²

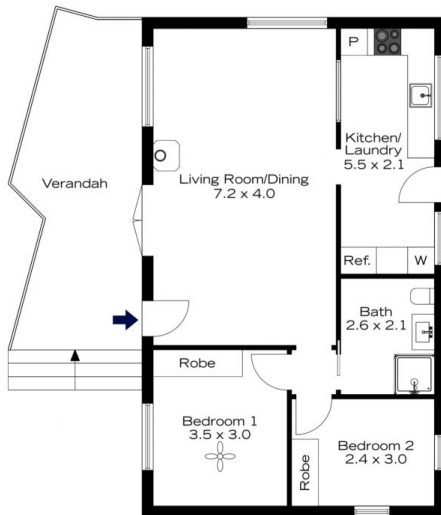
EXTERNAL
19 m²

TOTAL
86 m²

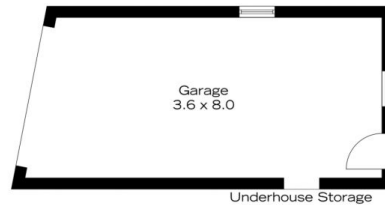
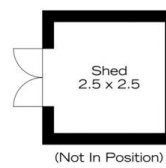


The floor plan is not to scale; measurements are indicative and in metres. All features included in this 3D plan are for inspiration purposes only. This is not an exact replica of the property or the position of exterior elements. Plans should not be relied on. Interested parties should make and rely on their own enquiries.

60 HAY STREET, LAWSON



Ground Floor



Lower Ground Floor

INTERNAL
67 m²

EXTERNAL
19 m²

TOTAL
86 m²



The floor plan is not to scale; measurements are indicative and in metres. Exterior elements are not in position. Plans should not be relied on. Interested parties should make and rely on their own enquiries.