



61 St Georges Crescent Falconbridge NSW

3 1

LOCATION

Positioned in a quiet street in Falconbridge, this north-facing home offers comfort, style and thoughtful updates in a peaceful Blue Mountains setting. Conveniently located just 900m (approx) to Falconbridge Train Station and 1.8km (approx) to local schools, it delivers the perfect balance of lifestyle and accessibility in one of the Mountains' most desirable pockets.

STYLE

A charming traditional weatherboard style home topped with a durable metal roof, polished timber floors and an elevated leafy outlook, set on a generous 923m² (approx.) block.

Type : House
Price : \$ 917,827
Land Size : 923.2 sqm
View : <https://www.chapmanrealestate.com.au/sale/nsw/hawkesbury/falconbridge/residential/house/8639342>

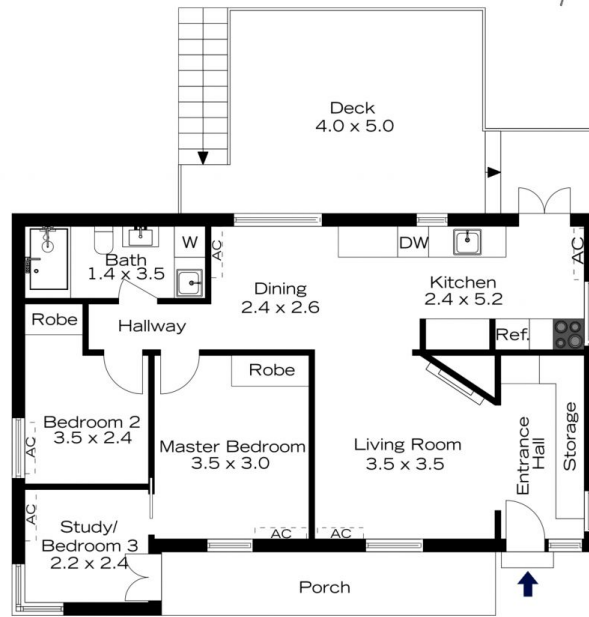


Hayley Clifton
02 4758 8603

[For full version visit the website](https://www.chapmanrealestate.com.au)

<https://www.chapmanrealestate.com.au>

61 ST GEORGES CRESCENT, FAULCONBRIDGE



INTERNAL
69 m²

EXTERNAL
32 m²

TOTAL
101 m²



The floor plan is not to scale; measurements are indicative and in metres. Exterior elements are not in position. Plans should not be relied on. Interested parties should make and rely on their own enquiries.

61 ST GEORGES CRESCENT, FAULCONBRIDGE



INTERNAL
69 m²

EXTERNAL
32 m²

TOTAL
101 m²



The floor plan is not to scale; measurements are indicative and in metres. All features included in this 3D plan are for inspiration purposes only. This is not an exact replica of the property or the position of exterior elements. Plans should not be relied on. Interested parties should make and rely on their own enquiries.